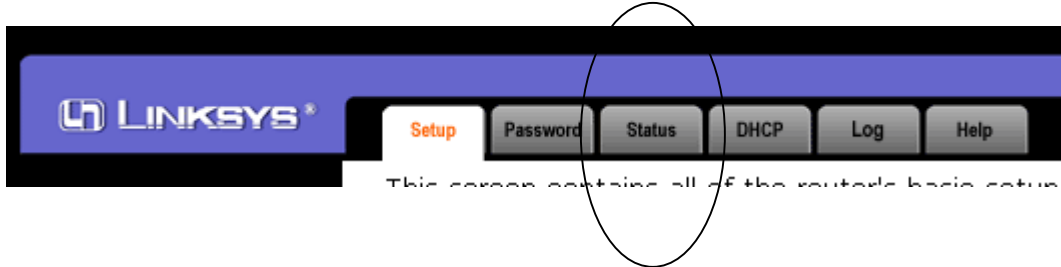


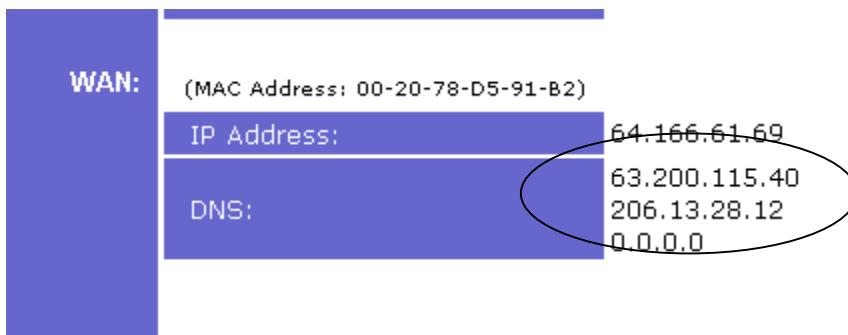
CHANGING THE ROUTER

Go into the router configuration 192.168.1.1 enter password of: admin

The following assumes you have already configured the Router to work in your environment and you are using a router that is using 192.168.1.1 as the gateway. Further this assumes that the server IP is set to 192.168.1.2 You may need to consult the supplier your router was purchased from.



Select STATUS to get your currently set DNS numbers, you may need to scroll all the way down the screen to view them.



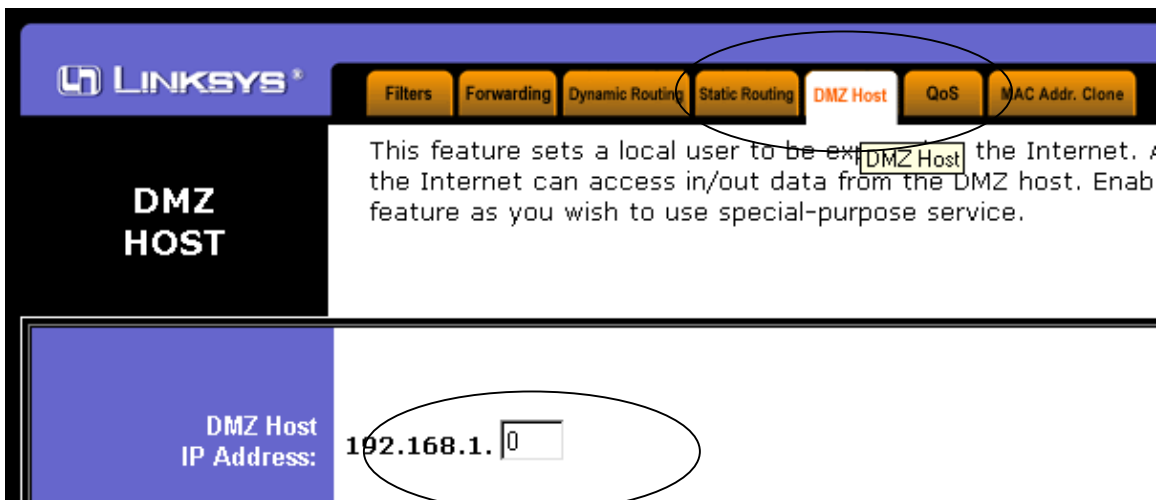
The above are sample numbers are not going to be the same on your system. In this example if this was your system you would need to write down the above numbers for later reference. Label these numbers as DNS numbers. In this example the DNS numbers are:

63.200.115.40
206.13.28.12

Next you will need to determine which computer is going to be the system accessed by PcAnywhere. I suggest that you will use the following static number for this computer as: 192.168.1.2
Therefore the following would apply:

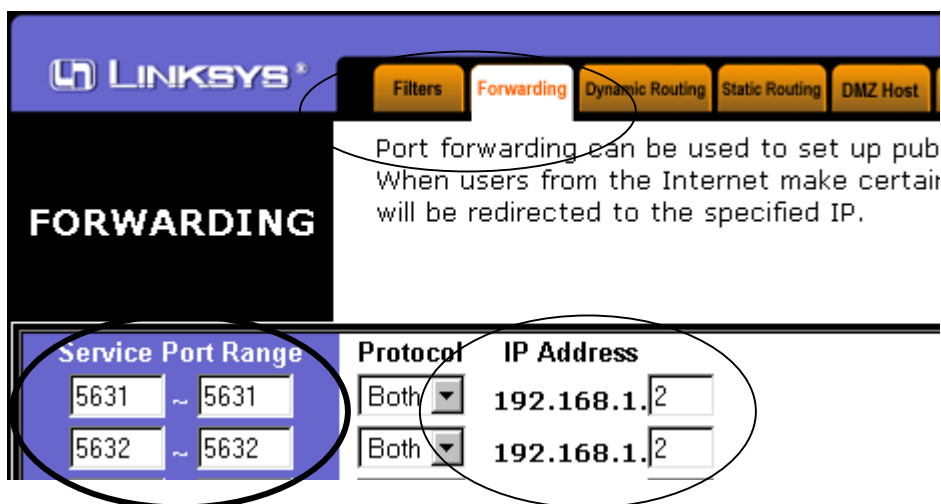


Select the ADVANCE TAB and then select DMZ as shown on the next page



Make sure you change to value above to 0 (zero) as shown to turn off the DMZ.

Next select the FORWARDING tab.



Under the service port entering one of the following:

SERVICE PORT RANGE would be:

5631~5631

5632~5632

5900~5900

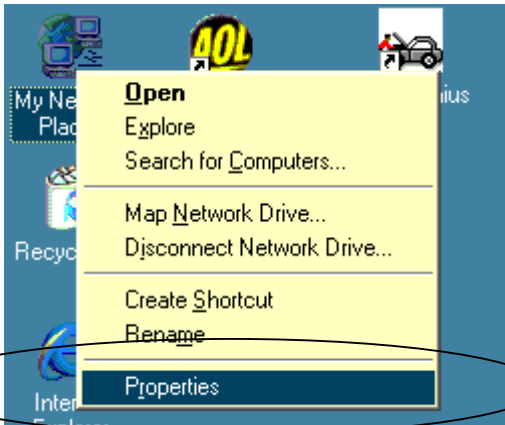
3389~3389

Be sure to change the ip address on the first two lines to "192.168.1.2". The last digit is the only item you have to change.

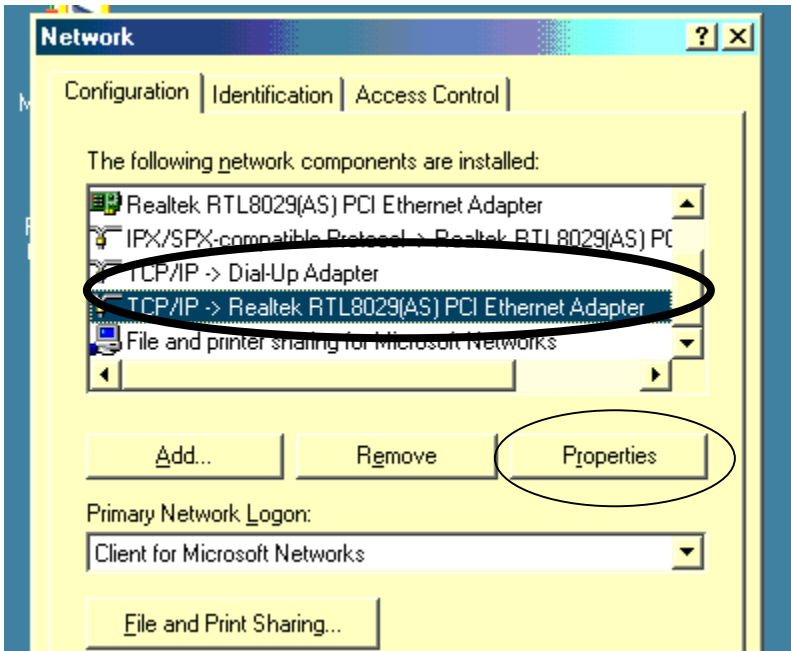
Going Static on Your Network



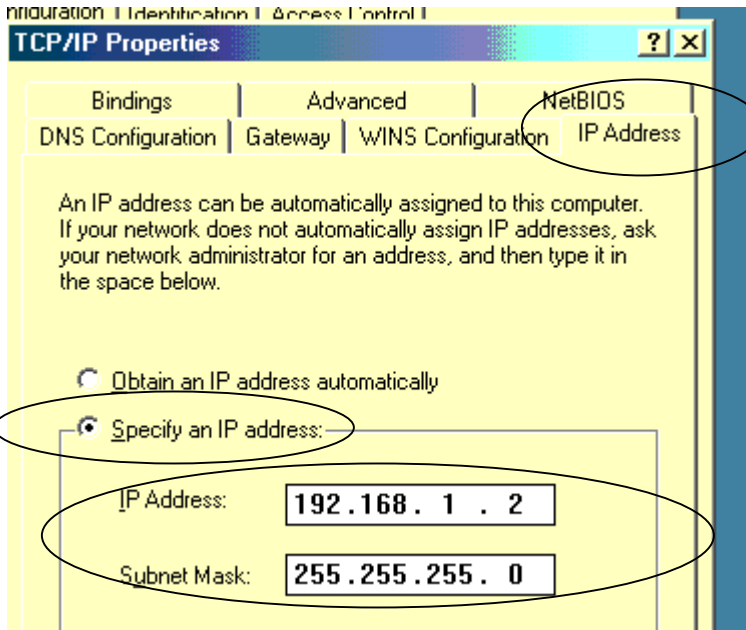
Right click on My Network Places (Windows ME) or Network Neighborhood (Windows 9x).



Select Properties



Select the TCP/IP protocol that is bound to your network card and then click on properties.

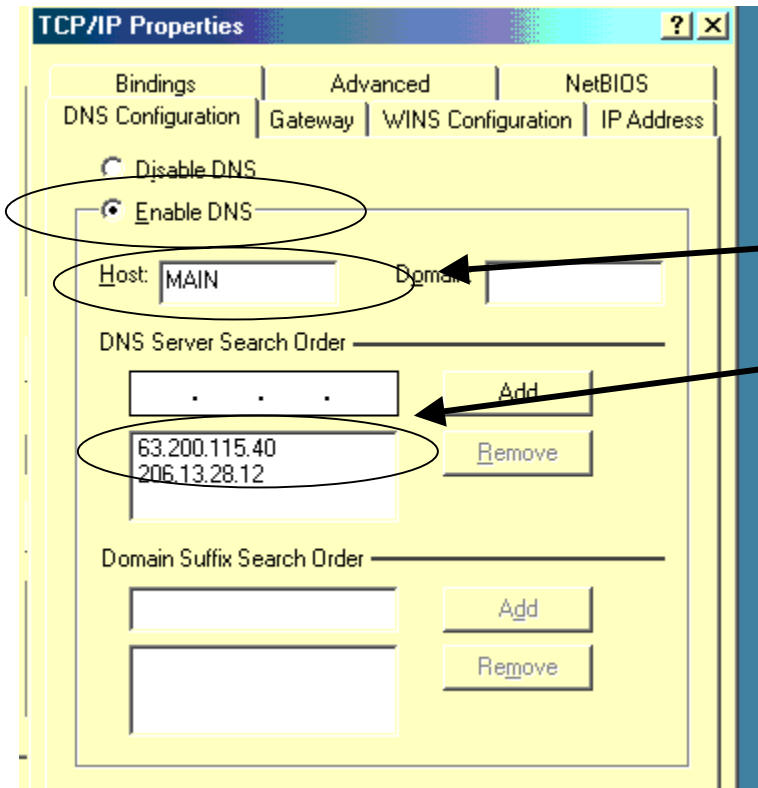


Select the IP address tab. Then select Specify an IP address and place a unique IP address for each terminal. Use the following pattern:

IP Address	Computer
192.168.1.2	Main Computer
192.168.1.11	Terminal 1
192.168.1.12	Terminal 2
192.168.1.13	Terminal 3

Be sure the last digit is in the range of 2 thru 99.

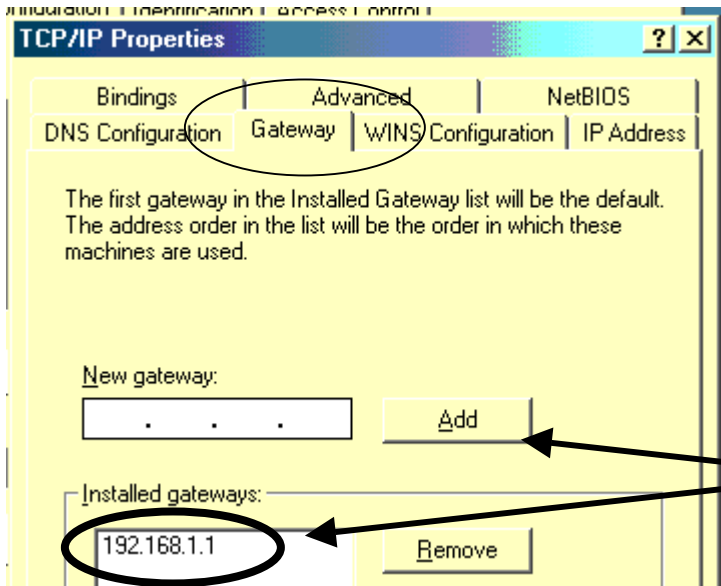
Set the Subnet Mask to:
255.255.255.0



Select Enable DNS

Enter a unique Host name on each terminal.

Add your DNS Server numbers gathered previously from your router. (SEE ABOVE) DON'T USE THE NUMBERS SHOWN HERE. YOUR DNS NUMBERS WILL BE DIFFERENT.



Select Gateway

Add the following gateway
192.168.1.1

Be sure to reboot your entire network and you may want to call our office to confirm that we are able to get onto your system after the above changes have been made.